

YEAR 8 EXAM PREPARATION BOOKLET

Glenthorne High School



HOW WILL I BE ASSESSED?

Students will be assessed in lessons to allow enough time to complete a high-quality observational drawing with design features which best reflects skill. The exam will focus on pencil drawing observational skills (AO3) and composition design (AO1). You will need to demonstrate an understanding of the formal elements e.g. shape, form, tone and texture. In Part 1 of the exam pupils will be creating an observational drawing of an animal's head in pencil. In Part 2, you will add patterns to reflect the style of the artist Kris Tate. The patterns will be completed in colour using colouring pencils or felt tip.

WHAT WILL BE COVERED?

The exam objective is to create a Kris Tate inspired piece. Step 1 is to draw an animal's head in detail in pencil. Step 2 is to add shapes and patterns in the style of Kris Tate on and around the animal's head in colour.

Success criteria include: drawing the animal's head which fills the majority of the page; including at least three tones in the drawing; including mark making to show the skin of the animal; adding geometric patterns in colour.

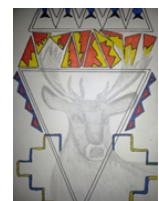
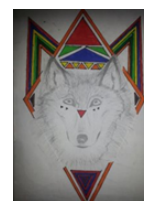
A good composition will: have little negative space, fill the page, demonstrate clear links with the artist, demonstrate an even arrangement of patterns, incline the eye to move around the entire piece.

HOW CAN I PREPARE?

Students can prepare by practising their observational skills by drawing of animals, with a focus on outline, proportion and surface texture. Students need to consider different marks and illustrate the animal's skin/fur. You will need to consider patterns which reflect the artist and consider the arrangement and details of these patterns. You may choose to explore the use of tonal pencils to support creating tones.

Please contact Miss Watson at swn@glenthorne.sutton.sch.uk if you have any questions.

Examples of year 8 exam outcomes



COMPUTER SCIENCE

HOW WILL I BE ASSESSED?

Students will be taking a computer-based exam which includes a mixture of written and multiple choice questions. These questions must be answered on the computer using the Socrative website. The answers are submitted to teachers automatically. Throughout the year student's projects/work will also be considered in order for their end of year grade to be calculated. (Computer hardware presentation, image types poster, Python quiz, spreadsheet model).

WHAT WILL BE COVERED?

All topics from the year will be covered during the assessment. These include computer hardware, data representation (images, sound and binary). Students understanding of these topics will be assessed through the assessment and their work. Paper will be provided for any working out.

HOW CAN I PREPARE?

Students can prepare for this exam by revising key areas within topics using their "Must Know" checklists in their books. Website links will be shared via FROG with useful content that can aid their revision.

Please contact Mrs Ononogbu at mon@glenthorne.sutton.sch.uk if you have any questions.



HOW WILL I BE ASSESSED?

Students will be taking one practical exam which will last 30 minutes. Class teachers will be arranging an internal practical performance assessment, that will culminate their knowledge of the 'Jazz Dance' scheme of work, that year 8 have been focusing on last term.

WHAT WILL BE COVERED?

Students will be expected to revise and demonstrate their knowledge of the key dance terms they have been learning this year. Students will be expected to perform the teacher set choreography along with their own group choreography. The practical criteria will be, demonstrates expressive skills (focus, projection, and facial expressions), choreography uses motif and development and repetition, choreography has a smooth transitions and peer feedback using the subject specific terminology.

HOW CAN I PREPARE?

Students should watch the Jazz Dance on the Glenthorne Dance YouTube Channel: Jazz Dance Flip Learning Video and Development of Jazz Dance.

Students should also use the KS3 Dance Key Skills frog site. They should aim to revise key skills and concepts that we used to enhance the quality of a performance, and develop the skills for choreography.

Students wanting to add challenge to their revision should use the displays in the Dance studio (GCSE Dance board) to expand their revision of performance skills.

Please contact Mrs Grant or your class teacher; Miss Clout or Miss Horwood if you have any further questions:

cgr@glenthorne.sutton.sch.uk

mcl@glenthorne.sutton.sch.uk

cho@glenthorne.sutton.sch.uk

D

A

N

C

E

HOW WILL I BE ASSESSED?

Students will be assessed through a 45 minute written exam paper based on skills and knowledge in D&T. Papers will include a range of questions that assess practical design and drawing skills as well as technical knowledge.

WHAT WILL BE COVERED?

Students will be assessed on key areas of the Design and Technology curriculum. However, the primary focus will be Foundations 3 and 4:

- Visual communication – isometric drawing and rendering
- Design movements
- Key designer: Yinka Ilori
- Product analysis
- Electronics
- OnShape software knowledge
- Techsoft 2D Design software knowledge
- Fibres and fabrics
- The sewing machine

HOW CAN I PREPARE?

As the assessment window approaches teachers will begin to set specific revision tasks as homework for pupils and during lesson time. We would highly recommend that pupils use their books to begin their own self-guided revision.

There are several helpful websites for pupils:

- <http://www.technologystudent.com/> <http://www.mr-dt.com/>
- KS3 Design and Technology - BBC Teach
- Explain This... Design and technology (D&T) - BBC Teach
- BBC Teach: Secondary Design Technology section on YouTube

Please contact Miss Frater at HFR@glenthorne.sutton.sch.uk if you have any questions.

HOW WILL I BE ASSESSED?

Students will be asked to explore, develop, perform and evaluate their own work. The exam is based around GCSE Component 3 and the creation of a piece of Drama from a script. Students will be asked to create a role play which addresses the issues within a script. Students will be asked to create a role play based around a story which uses a range of abstract and naturalistic techniques. They should aim to educate the audience about the issues. The evaluation will begin to assess students' ability to be able to identify areas of strength and weaknesses and also an understanding of how they achieved their intention. There will be 4 questions which students will be given 15 minutes to respond to.

WHAT WILL BE COVERED?

Students will be expected to demonstrate how well they are able to apply skills in the 4 different assessment objectives:

- Create - How well students are able to create and develop a piece of Drama inspired by a script.
- Perform - How students are able to effectively communicate meaning through a final performance.
- Knowledge - Their knowledge and understanding of different Dramatic terminology including staging configurations, rehearsal and explorative strategies, mediums and elements of Drama.
- Evaluate - How well students can recognise how meaning is created through Drama and how successful they are at being able to recognise the merit of different techniques that have been used to communicate meaning.

HOW CAN I PREPARE?

Students will need to ensure that they are revising the different Drama terminology that they have explored in their lessons, including staging configurations, rehearsal and explorative strategies and the different mediums and elements of Drama. In the lessons leading up to their practical examination, students should ensure that they continue to concentrate on building their confidence in working in groups and individually.

Please contact Ms Perren at kpe@glenthorne.sutton.sch.uk if you have any questions.

D
R
A
M
A

ENGLISH

HOW WILL I BE ASSESSED?

Students will sit one exam lasting 45 minutes. This will be a reading assessment focusing on units of work they have studied so far this year including poetry and Shakespeare. This will be marked using the KS3 Assessment Criteria which students are familiar with as this is used throughout the year on all prior assessments. The format of the paper will be based upon the English Literature aspect of the GCSE syllabus and will crossover in skills used for the Power and Conflict poetry section/ Unseen poems/ the Shakespeare section.

WHAT WILL BE COVERED?

Reading section: Students will read an unseen poem which connects to thematic elements they have studied throughout the year and the Shakespearean unit they are also studying prior to the exam. They will answer a question that prompts students to demonstrate their comprehension of the text as well as their ability to analyse the effects of language and structure whilst commenting on the writer's intentions.

HOW CAN I PREPARE?

In the lead up to the exams, teachers will be aiding exam preparation through teaching the Shakespearean unit of Romeo and Juliet. Furthermore, in accordance with the school's homework policy, teachers will also be setting homework tasks focused on preparation for the exam which direct students to prior learning of the poetry unit.

Students could further prepare for the exam by also:

- Looking back at their EBIs from assessments throughout the year, ensuring that they are confident in how to address these areas within their work
- Revise how to structure an effective analytical paragraph
- Learn key terminology for analysis, providing examples of key devices
- Continuing to read widely, compiling a glossary of sophisticated and ambitious vocabulary that could be used within a piece of persuasive writing
- Use revision websites like BBC Bitesize:

<https://www.bbc.com/education/guides/zwjsyrd/revision>

Please contact Ms Corke at RCO@glenthorne.sutton.sch.uk if you have any questions.



GEOGRAPHY

HOW WILL I BE ASSESSED?

Pupils will be assessed in a mixture of ways. Some topics will have an assessment comprising of multiple-choice questions, short answer response questions and long answer response questions. This reflects the style of questioning seen in GCSE+ assessments. Other topics will be assessed through extended writing in order to improve pupils' ability to formulate arguments within their writing and justify their viewpoints.

Questions will require understanding of key geographical processes and key terminology, as well as justifying viewpoints. A key skill in Geography assessments is also responding to graphs, images, maps, and data, where pupils will need to apply their knowledge to the novel situation presented.

WHAT WILL BE COVERED?

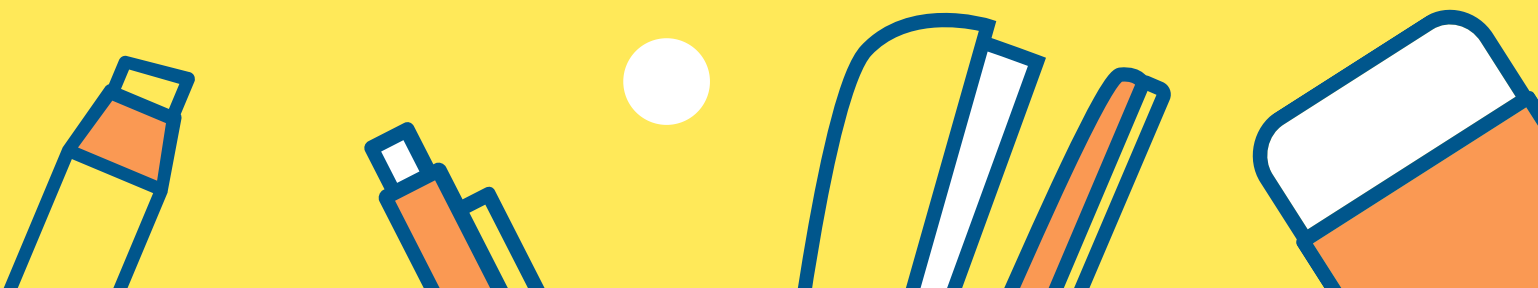
Topics covered are as follows:

- Population
- Development
- Globalisation
- Weather & Climate
- Glaciation

HOW CAN I PREPARE?

Pupils will be given a revision checklist and revision material prior to the assessment. They will also have a lesson of revision to go over both knowledge and exam skills. Pupils will be given structured revision homework that they should complete using the revision material and their books. Many of the topics taught have sections on BBC Bitesize and videos on Time for Geography, which can be used to support students further.

Please contact Mr Saunders at msa@glenthorne.sutton.sch.uk if you have any questions.



HOW WILL I BE ASSESSED?

The students will sit an exam which will last 45 minutes. The exam will test students on their knowledge and understanding of the events that they have studied in Year 8. The exam will also evaluate their analytical skills in writing an explanation of events and their ability to evaluate sources.

WHAT WILL BE COVERED?

- Enslavement to Abolition: Africa pre-1700, why Africans were enslaved, the middle passage, life for enslaved Africans, resistance, enslavement in Britain, how enslavement was abolished.
- The Industrial Revolution: how Britain became industrialised 1750-1900, the importance of coal, iron and steam, working in coal mines, working in factories, why Britain had an empire, trade in the empire and attitudes to the British Empire.
- Health and Housing: The treatment of children in factories, child labour laws, life in the workhouse, living and working conditions in London, the Cholera epidemic, Liberal reforms in the 1900s, creation of the NHS.
- World War One: long and short term causes of WWI, fighting in the trenches, Kitchener and recruitment into the army, weapons and tactics, General Haig and the Battle of the Somme, propaganda and censorship, women.
- Interwar Years: the Treaty of Versailles and its impact on Germany, 1920s economic boom, rise of the dictators, Hitler's promises to Germany, Appeasement and the road to WWII.

HOW CAN I PREPARE?

- Students should test themselves on the revision cards and knowledge checklists that they have developed.
- They should log in to frog to download a revision checklist and ensure they know everything on it.
- They should go over corrections from previous work and make sure they know how to improve their writing.
- They should complete practice questions provided by their teacher.

Please contact Mrs Seymour, Subject Leader for History at nse@glenthorne.sutton.sch.uk if you have any questions.



H

I

S

T

O

R

Y

HOW WILL I BE ASSESSED?

Each pupil will be taking two exams: one non-calculator and one calculator paper. These will take place on separate days within the lesson. Each paper will last 45 minutes. There will be three tiers of entry: higher, middle, and lower for Paper 1 (non-calculator). Class teachers will explain which tier each pupil will be sitting in. All the pupils will be sitting a common exam, Paper 2 (calculator).

Results of end of year exams, alongside teacher assessment, will be used to inform set changes moving into Year 9.

WHAT WILL BE COVERED?

In the weeks preceding the exams, the class teacher will give pupils a 'Can Do' sheet. This sheet will enlist all the subject material and concepts that will be tested in the two papers. Students will self-assess the topics in lessons using the 'traffic light' system, and areas that are coded as 'Amber' or 'Red' indicate insecure subject knowledge. These topics should be a focus for independent revision.

HOW CAN I PREPARE?

The Year 8 Maths course is based on the Mastery framework the details of which can be overviewed on the [White Rose platform](#), and the video lessons can be accessed on the same website [here](#). The advice is to use videos, exemplar questions, and end-of-block assessments for specific areas identified on the 'Can Do' sheet. The guidance is to also revisit homework tasks, past in-class and key assessments, and interleaving revision homework set throughout the year.

In addition, class teachers will be preparing revision lessons, resources, and suitable homework. Pupils have also been provided with a sheet on 'Useful KS3 Websites' for additional resources.

Please contact Mrs Adams at lad@glenthorne.sutton.sch.uk if you have any questions



M

A

T

H

S

MFL

HOW WILL I BE ASSESSED?

Students will be assessed in three skills. The Reading and Listening assessment contain several comprehension questions to show how well students understand the vocabulary learnt through the year, including a dictation. The writing assessment will test student's ability to recognize and conjugate verbs in the three tenses and their ability to prepare a full picture card.

WHAT WILL BE COVERED?

French:

The two exams will cover the four Year 8 modules -

- Module 1: Les vacances - activities on holidays using the past, present and future tenses. Picture description and revision of the present & near future.
- Module 2: On fait la fête - talking about celebrations, revision of three tenses, and picture cards.
- Module 3: Mes passe-temps - talking about sports, music and other hobbies in three tenses. Asking some questions.
- Module 4: Là où j'habite - Describing where you live and what you can do in your region, weather, chores using modal verbs.

Spanish:

The two exams will cover the four Year 8 modules

- Module 1 De vacaciones - Using the preterite tense to say where you went on holiday, what you did and how it was.
- Module 2: De fiesta - talking about celebrations, revision of three tenses, and picture cards.
- Module 3 Mi vida - Saying what you use your phone for, opinions on music, tv and film, the future tense, using the preterite tense.
- Module 4: ¿Qué hacemos? - Arranging to go out, giving excuses, discussing daily routine and using the future tense to say what you are going to wear, using the present, preterite and future to give an account of an event.

HOW CAN I PREPARE?

Use your exercise book, to revise all the Key Grammar points from across the year. Look at the feedback from your teacher(s), you can redo some of the exercises, and some of the assessments to practice. Pupils will be given a revision checklist prior to the assessments and tailored revision homework.

On Quizlet, practice this year's vocabulary. Every word you have seen is on Quizlet! In your revision booklet, work through the practice exam questions. There are questions to help you prepare and practice for the Listening, Reading, and writing exams!

Please contact Mr Chiriatti at tch@glenthorne.sutton.sch.uk if you have any questions



MUSIC

HOW WILL I BE ASSESSED?

The students will be given a paper that comprises of two parts. The first part will be listening to different pieces of music based on the topics they have covered this year and they will have to answer questions about them. The second section is Music Theory where pupils will have to identify note names on the treble clef, note values and how to write a rhythm, notes on the keyboard, how to construct chords and the identification of musical symbols and terms. The pupils will be able to complete this section in the remaining time given and can go at their own pace.

WHAT WILL BE COVERED?

- Section A- Rhythms of the World (Calypso, Jazz, Blues, Samba, Reggae, African Drumming), Film Music and Musical Theatre
- Section B- Music Theory

HOW CAN I PREPARE?

There is a FROG site that contains everything that the pupils need for their assessment. We will also be preparing the pupils for their assessment in class so they will know exactly what they can do to prepare. Throughout the course of the year, the students have been writing down glossary keywords in their books to prepare them for their end of year exam. The best thing they can be doing is listening to lots of music from the different styles we have covered this year and practice describing it. To support pupils with their understanding of music theory, there is a website www.musictheory.net where pupils can go through 'lessons' and practice some of the main concepts.

Please contact Mrs Waterworth at ewa@glenthorne.sutton.sch.uk if you have any questions.





HOW WILL I BE ASSESSED?

Each Student will complete a 12-minute Cooper run and be given a grade based on their aerobic fitness level. Class teachers will also use each student's best three practical grades from the range of activities covered over the year to generate an overall grade.

WHAT WILL BE COVERED?

The Cooper run is a continuous running test requiring the students to run/jog/walk for 12 minutes continuously around the 400m running track on the school field. At 25m intervals there will be markers placed on the track to allow the total distance covered within the 12 minutes to be recorded and compared to normative data to give a score.

HOW CAN I PREPARE?

We strongly encourage all students to regularly take an interest in their own fitness and participate in physical activity outside of school and to regularly take part in extra-curricular clubs whilst in school. Students can attend athletics club Monday and Tuesday lunch every week to support them in improving specific areas of their fitness. Students keen to regularly exercise outside of school can also complete activities such as HIIT training following you tube links such as Joe Wicks. Students can also walk, cycle or run in their local area and monitor their progress using apps such as Strava which records distance and time.

Please contact Mr D Castle at DCA@glenthorne.sutton.sch.uk if you have any questions.



HOW WILL I BE ASSESSED?

Students will sit an exam which will last 45 minutes. The exam will test students on their knowledge and understanding of the beliefs and practices studied in Year 8. The exam will also evaluate their analytical and evaluation skills.

WHAT WILL BE COVERED?

- Sikhism: Beliefs, teachings and practices – The 5 Ks and their importance, worship, the Guru Granth Sahib, Langar, Sikhism in the UK.
- Buddhism: Beliefs, teachings and practices – Buddha, Buddha's answer to suffering, the Four Noble Truths, Meditation, influence of Buddhism today.
- Judaism: Beliefs, teachings and practices – Origins of Judaism, covenants, Tanakh, synagogues.

HOW CAN I PREPARE?

Teachers will be preparing revision lessons leading up to the assessment. However, it is very important that students are doing their own personal revision. This can include creating detailed mind maps, revision cards of key concepts and doing practice exam questions provided by their teacher.

Students should also be reading over their previous EBIs to ensure they are using them as a focus to their revision..

Please contact Mrs Seymour at nse@glenthorne.sutton.sch.uk if you have any further questions.

SCIENCE

HOW WILL I BE ASSESSED?

Students will have 3 exams. Each exam will assess both subject knowledge and scientific skills from the topics covered in year

Skills are assessed in a number of ways including:

- Identifying equipment
- Taking measurements
- Identifying variables in investigations
- Drawing scientifically-appropriate graphs and tables
- Interpreting data from tables and graphs
- Suggesting ways in which accuracy of investigations can be improved

Results of end of year exams, alongside teacher assessment, will be used to inform set changes moving into Year 9.

WHAT WILL BE COVERED?

Paper 1: Biology

- Organisms
- Ecosystems
- Genes

Paper 2: Physics

- Waves
- Forces
- Energy
- Electromagnets

Paper 3: Chemistry

- Matter
- Chemical Reactions

HOW CAN I PREPARE?

Students will be set exclusively revision-based homework as part of their exam preparations. Revision materials and full exam checklists will also be posted on Frog. These will include links to past-exam questions, BBC bitesize web pages and revision videos (as well as optional challenge resources). Students should check their revision progress by using the exam checklists, as well as attempting past-exam questions to practice applying their knowledge. Students can also use their CGP revision guides to prepare and should speak to their subject teachers for further information on how to use these.

Please contact Miss E Newman at ene@glenthorne.sutton.sch.uk if you have any questions.

